



Citroën e-SpaceTourer
Peugeot e-Traveller
Toyota Proace Verso Electric
Opel Zafira-e Life
Vauxhall Zafira-e life
Fiat e-Ulysse



VAUXHALL

PEUGEOT

TOYOTA

CITROËN

Table of contents

General

| | |
|----------------------|---|
| -Introduction | 3 |
| -Vehicle information | 4 |
| -Safe use | 5 |

Safety systems

| | |
|----------------------|---|
| -Wheelchair tie-down | 6 |
| -Occupant securement | 7 |

Operation

| | |
|-------|---|
| -Ramp | 8 |
|-------|---|

Electric system

| | |
|--------|----|
| -Fuses | 10 |
|--------|----|

Options

| | |
|---|----|
| -TriflexAir seats | 11 |
| -Rear collision protection named Bodyguard (optional) | 12 |

Technical

| | |
|---------------------------------------|----|
| -Identification sticker | 13 |
| -Rear bumper | |
| -Exhaust system | |
| -Tailgate | |
| -Fuel tank | |
| -Maintenance WAV conversion | 14 |
| -Maintenance checklist WAV conversion | 15 |
| -Part 2 - WAV Technical Specification | 16 |

Warranty

| | |
|-------------------------|----|
| -Disclaimer of warranty | 18 |
|-------------------------|----|

Introduction

Your vehicle has been modified to transport occupants in a wheelchair. This places the vehicle in the "Wheelchair Accessible Vehicle" (WAV) category. All modifications equal the vehicles manufacturer quality resulting in an unaffected lifespan of the vehicle and safety of its passengers.

This instruction manual explains the use and operation of all parts modified and installed new in the vehicle. Reading it is a necessity for safe use and proper maintenance.

Tripod Mobility wishes' you much pleasure with your new adapted vehicle!

Vehicle information

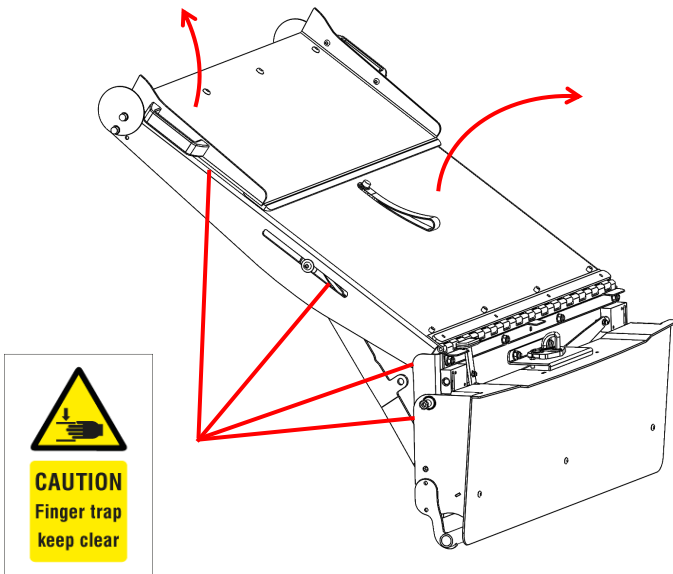
| Base vehicle details | |
|-----------------------------------|--|
| Make (base vehicle) | Peugeot/Citroën/Vauxhall/Toyota |
| Commercial name (base vehicle) | Traveller/Spacetourer/Zafira/Proace |
| Base vehicle type approval number | e2*2007/46*0532 and e2*2007/46*0530 |

| WAV details | |
|----------------------------|---|
| Make (WAV) | Peugeot/Citroën/Vauxhall/Toyota |
| Commercial name (WAV) | Traveller Tripod/Expert Tripod Spacetourer Tripod/Jumpy Tripod Vivaro (Life) Tripod/Zafira Life Tripod Proace Tripod |
| Type approval number (WAV) | e4*2007/46*1290 and e4*2007/46*1291 |
| PAS approval number | PASAPP 0177 |

| | |
|-------------|----------------------------------|
| Type of WAV | Assisted / Unassisted |
|-------------|----------------------------------|

Safe use

Caution with all moving parts. Serious damage could be caused by inadequate operation. Illustrated are a few examples of parts where caution is required. Extra Caution is required with possible opted activated features like automatic hatch and ramp openers and a winch.



Wheelchair tie-down

The tie-down system consists of 2 electric locking reels in the front and 2 manually operated retractors in the back. Detailed instruction on how to set up and apply the safety equipment can be found in the supplied instruction manual of the securement system manufacturer.

*consult the wheelchair manufacturer or documentation on what attachment points of the wheelchair are suitable for tie-down in a vehicle

In order to make a free path, rear retractors may have to be removed of the floor mounts by pulling them backwards.

The red switch found on the right side panel unlocks the front reels (LED visible). Fasteners (often hooks) can both be retracted and connected to the wheelchair positioned at the bottom of the ramp. Lock the front reels by flipping the switch on the side panel (LED off). The spring loaded belts will automatically retract and lock when the wheelchair is pushed in position.



(Re) install both rear retractors on the floor, now they can be mounted and connected to the wheelchair. Knobs on the side of the retractors are used to tighten the belts.

Rear retractors can be released with a lever positioned on the back of the retractor and removed from the floor by pulling them backwards. Front reels can be released by flipping the switch on the right side panel (LED visible). Push the wheelchair slightly forward to release the front retractors of their locks and roll out the wheelchair and it's occupant.

Always mount the rear retractors onto the floor mounts when not in use. Unsecured objects can cause trauma to passengers during vehicle collision.

Occupant securement

Securing both the wheelchair and the occupant is mandatory. Detailed instruction on how to set up and apply the safety equipment can be found in the supplied instruction manual of the securement system manufacturer.

More enhanced protection during a rear and lateral collision can be obtained by installing the bodyguard.

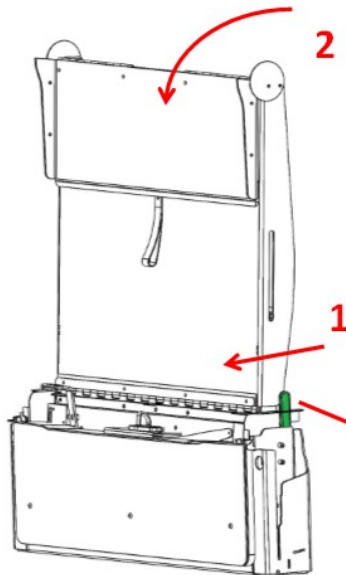


Ramp

Most types of ramps open by operating the lever on the right side of the ramp. Pull this lever towards you to open the ramp.

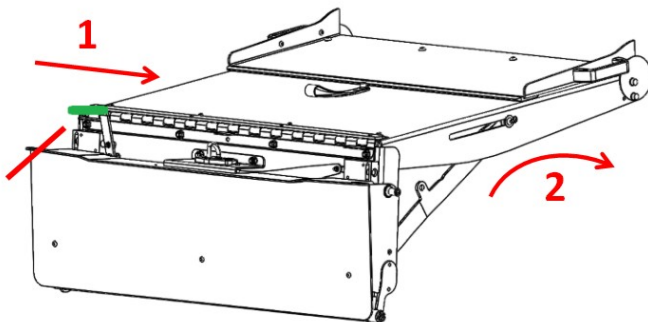
All flat folding ramps have an additional lever on the left side to fold the ramp in flat position.

The foldable ramp can be folded inwards to cover the lowered floor. This creates a flat floor comparable to the cargo floor before conversion. The maximum load capacity for this area is 80 kg.

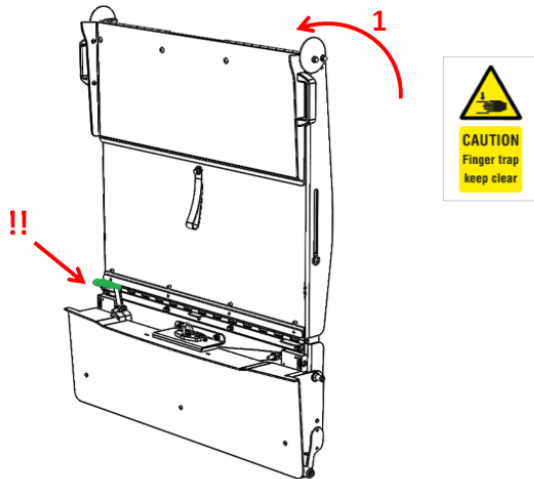


**MAX LOAD
WHEELCHAIR
300KG**

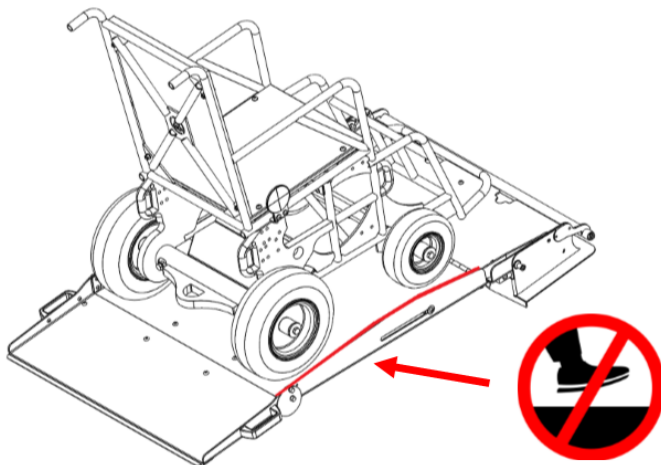
**WHEN FOLDED
80KG**



To use the ramp for a wheelchair again, the ramp must be folded up. The ramp will lock itself when folding up. However check carefully whether the ramp is locked to prevent the mechanism from malfunctioning in the future. The ramp is only successfully locked when the locking lever is horizontal and a click is heard.

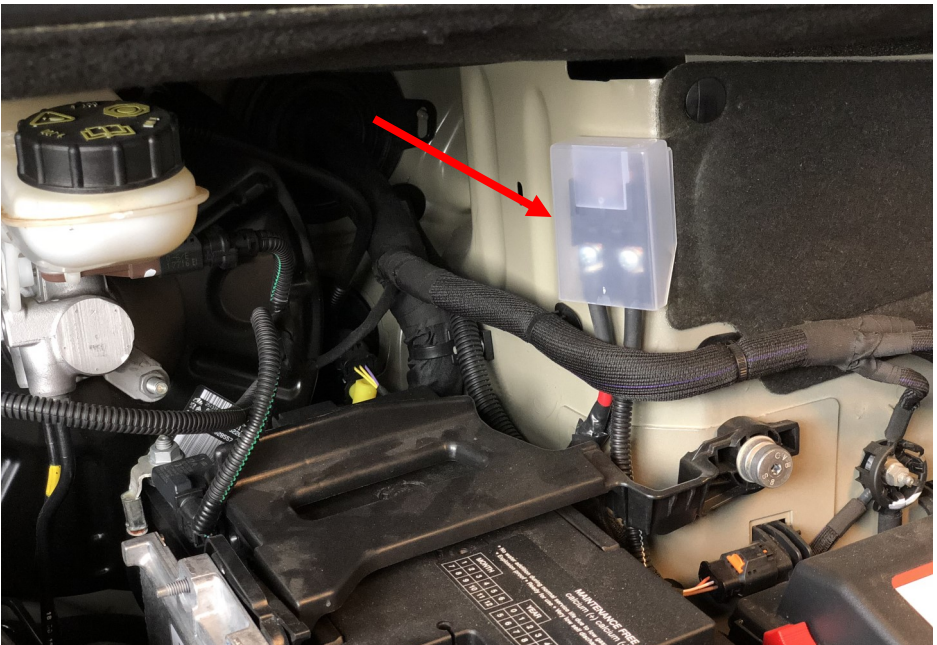
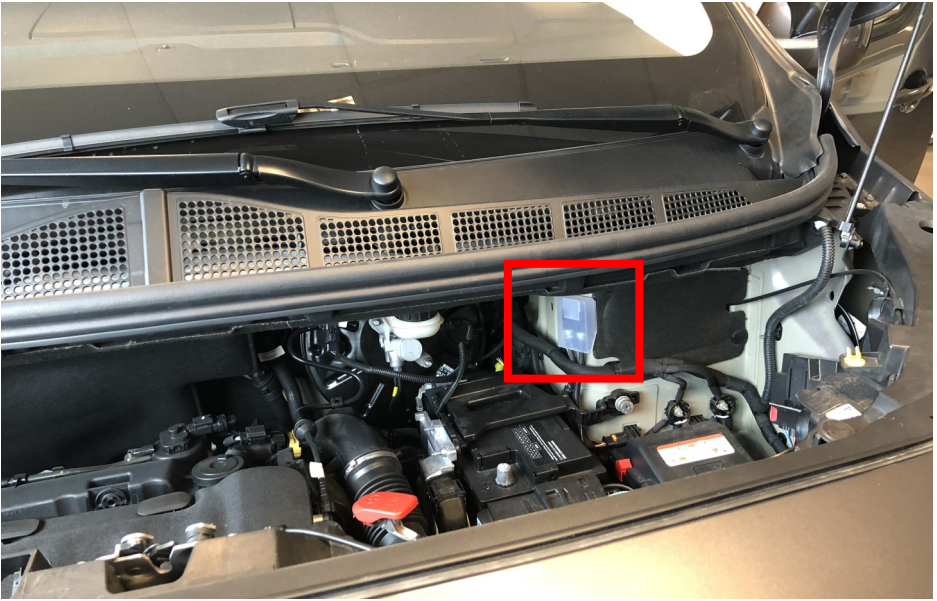


To prevent damaging the ramp it is not allowed to stand on the edges of the ramp when it is being used..



Fuses

Opening the hood, on the right side the fuse box can be found. After wheelchair conversion a red 10 Amp fuse is added.



TriflexAIR swivel seats

TriflexAIR swivel seats on the 3rd and 4th row can be rotated ninety degrees to create room for the wheelchair passenger. In order to rotate the TriflexAIR seats first lift the seat, pull the red lever and rotate the complete seat.

Note:

When you are using the RIPS (Bodyguard) and the wheelchair on the second row, you are not allowed to use the TriflexAir seat on the third row



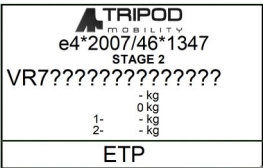
Rear collision protection named Bodyguard (optional)

During a rear collision, protection can be provided by the optional bodyguard. A fully adjustable backrest mounted on a swivel base provides protection to back and neck. Opening and closing of the bodyguard can be done by lifting handle 1. The backrest is now free to rotate inside or outside the vehicle. Detailed instruction on how to set up and apply the safety equipment can be found in the supplied instruction manual of the securement system manufacturer



Identification sticker

An identification sticker can be found in the opening (B-pillar) of the right side front door. Data concerning the conversion and replacement parts can be obtained by the dealer with the numbers on this sticker.



Bumper

Replacement bumpers can be ordered directly by the manufacturer of the vehicle. Modifications to the bumper are done by the supplier of the conversion. Replacement bumper covers can also be obtained and installed by this supplier

Tailgate

Replacement parts for the modified tailgate can be obtained and installed by the supplier of the conversion.

*Note, in some vehicles the original gas struts have been replaced by stronger gas struts. Replacement gas struts are too obtained by the conversion supplier.

Exhaust system

Part of the exhaust system has been modified. The supplier of the converted vehicle has knowledge what parts are obtained by the manufacturer of the vehicle and what parts are modified. Exhaust parts close to the engine are not modified and can be obtained by the manufacturer of the vehicle directly.

Fuel tank

Only the position of the original fuel tank is been changed

For maintenance always contact your conversion dealer
(See identification label in right B-pillar)

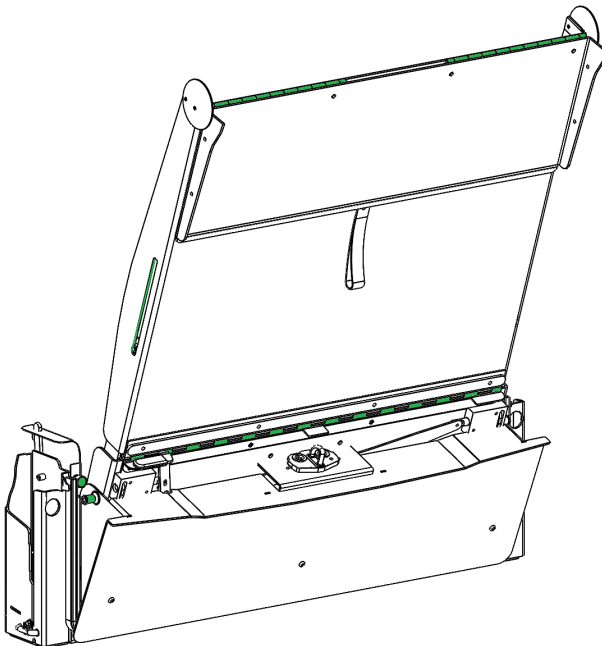
Maintenance WAV conversion

All maintenance concerning the conversion is in addition to, and in compliance with, the required maintenance recommended by the vehicles manufacturer. Only mild solvents are allowed to be used cleaning the interior of the vehicle. Strongly forbidden are acidic cleaners, excessive amounts of water (hose), abrasives and any kind of scourer.

Strongly recommended is a maintenance check with an interval of 1 year. This check should be executed by your dealer that has knowledge about the conversion.

Marked green in the illustrations on this page are some examples of parts that are important to be kept clean and lubricated. Your dealer knows what lubricants are best to use.

Vacuum cleaning the lowered floor pan and ramp on a very regular basis prevents dirt getting into moving parts. Attachment of dirt to grease and lubricants in moving parts results in higher wear and tear.



Maintenance checklist WAV conversion

- ◇ Clean and lubricate (with a Teflon (PTFE) spray) all moving parts
- ◇ Inspect rear retractors on proper operation and if necessary clean them
- ◇ Inspect electric front reels on proper operation and if necessary clean them
If the retractors are placed in the lowered floor, clean this space by the
Removing the cover plates.
- ◇ Check if electric front reels automatically lock (if unlocked) when closing the
rear hatch
- ◇ Inspect all webbing on damage
- ◇ Check all seats on proper operation of folding up and down including inspec-
tion of all latches and strikers
- ◇ Inspect ramp and hatch seals on cracks and openings
- ◇ Check exhaust system on corrosion and damage that results in leaks
- ◇ Check all brake lines for damage, traces of leakage and fixation to body
- ◇ Check all fuel lines for damage, traces of leakage and fixation to body
- ◇ Check the fuel tank for damage and traces of leakage
- ◇ Inspect underseal body coating for proper corrosion protection
- ◇ Inspect all coated ramp, tailgate extension, rear cross member and other
parts on proper corrosion protection
- ◇ Try triggering all rear parking sensor (optional)

Part 2 - WAV Technical Specification

(All measurements maximum and/or minimum as indicated for approved model range)
(Add / extend tables as necessary)

All lengths in mm; all masses in kg; all angles in degrees

WAV

Basic Vehicle Dimensions

| Layout | Maximum permitted axle mass (kg) | | Gross vehicle mass (kg) | Kerb mass (kg) | Fuel tank capacity (litres) | Ground clearance (mm) |
|--------|----------------------------------|-----------|-------------------------|----------------|--|-----------------------|
| | Front axle | Rear axle | | | | |
| | As stage 1 | | | Stage 1+71 | Not Applicable (Electric Vehicle only) | 120 |

Seating Provisions

| Layout | Maximum number of designated wheelchair positions | Up front wheelchair position? (Yes/No) | Maximum wheelchair mass (kg) | Maximum number of seating positions (inc. driver) | Spare wheel or puncture repair kit? (Spare/PRK) |
|--------|---|--|------------------------------|---|---|
| All | 1 | No | 85 | 9 | PRK |

Details of any limitations on seating capacity when carrying wheelchairs:

| Layout | Seating Limitations |
|--------|--|
| | Row 3 seats cant be used when wheelchair in position |

Wheelchair Entrance Dimensions

| Layout | Width (mm) | Height (mm) |
|--------|------------|-------------|
| All | 810 | 1470 |

Wheelchair Designated Travelling Position Accessibility

| Layout | Width (mm) | Length (mm) | Height (mm) |
|--------|------------|-------------|-------------|
| All | 810 | 1370 | 1445 |

Wheelchair Designated Travelling Position Dimensions

(add table / extend table as necessary)

| Layout | Wheel Chair Position | Distance from Datum to P Point: (mm) | Width (mm) | Length (mm) | Travelling position headroom (mm) | Maximum seated eyeline height (mm) | Travelling position gradient (°) | Maximum internal floor slope (°) |
|--------|----------------------|--------------------------------------|------------|-------------|-----------------------------------|------------------------------------|----------------------------------|----------------------------------|
| All | Rear | 551 | 810 | 1370 | 1455 | 1310 | 7.3 | 10.5 |

Ramp (if fitted)

| Layout | Width (mm) | Deployed Length (mm) | Maximum ramp projection (mm) | Maximum Angle (°) ⁽¹⁾ | Safe working load (kg) | Attachment method (Permanent / Removable) | Position (Side / Rear) |
|--------|------------|----------------------|------------------------------|----------------------------------|------------------------|---|------------------------|
| All | 765 | 1210 | 1040 | 11 | 310 | Permanent | Rear |

(1) For side-entry WAV record the greatest value as the maximum angle, when deployed onto a 125mm surface

Lift platform (if fitted)

Not Applicable

Winch (if fitted)

Not Applicable

Notes and Additional Information:

| |
|------|
| None |
|------|

Disclaimer of warranty

Your vehicle has been thoroughly checked before delivery. The warranty covers normal use by the wheelchair user and other passengers as described in this manual. The vehicles manufacturer warranty on the base-vehicle remains applicable (See the specific manufacturers conditions of warranty).

Tripod Mobility grants a 36-month or 36000 miles (whichever comes sooner) conversion warranty on parts and/or structural defects, excluding corrosion, after delivery. Conversion warranty on corrosion is the same as the base vehicle manufacturer offers on vehicle bodywork repairs or 5 years, whichever is sooner. Parts will be replaced or repaired by Tripod Mobility, or in agreement with Tripod Mobility, by your dealer.

In case of repairs executed without Tripod Mobility's express consent, our warranty is voided. In case of negligence, overdue maintenance and/or modifications to the conversion, the warranty is voided.



Collseweg 10 • 5674 TR Nuenen • **T** 040 283 64 42 • **F** 040 283 62 45
E info@tripodmobility.com • www.tripodmobility.com